

AUGUST 1, 2020  
“FAITH AND WISDOM”

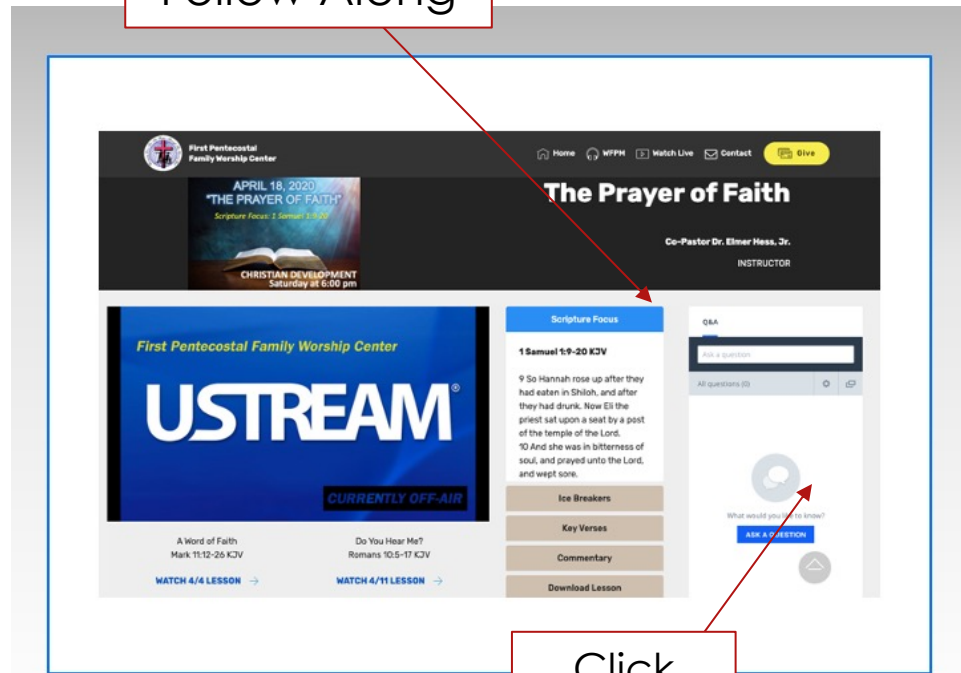
*Scripture Focus: James 1:1-11*



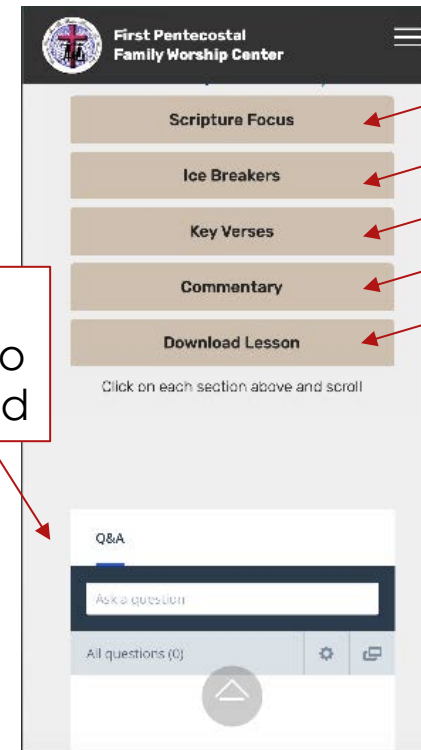
**CHRISTIAN DEVELOPMENT**  
**Saturday at 6:00 pm**

# Q&A: Questions/Responses

Click to  
Follow Along



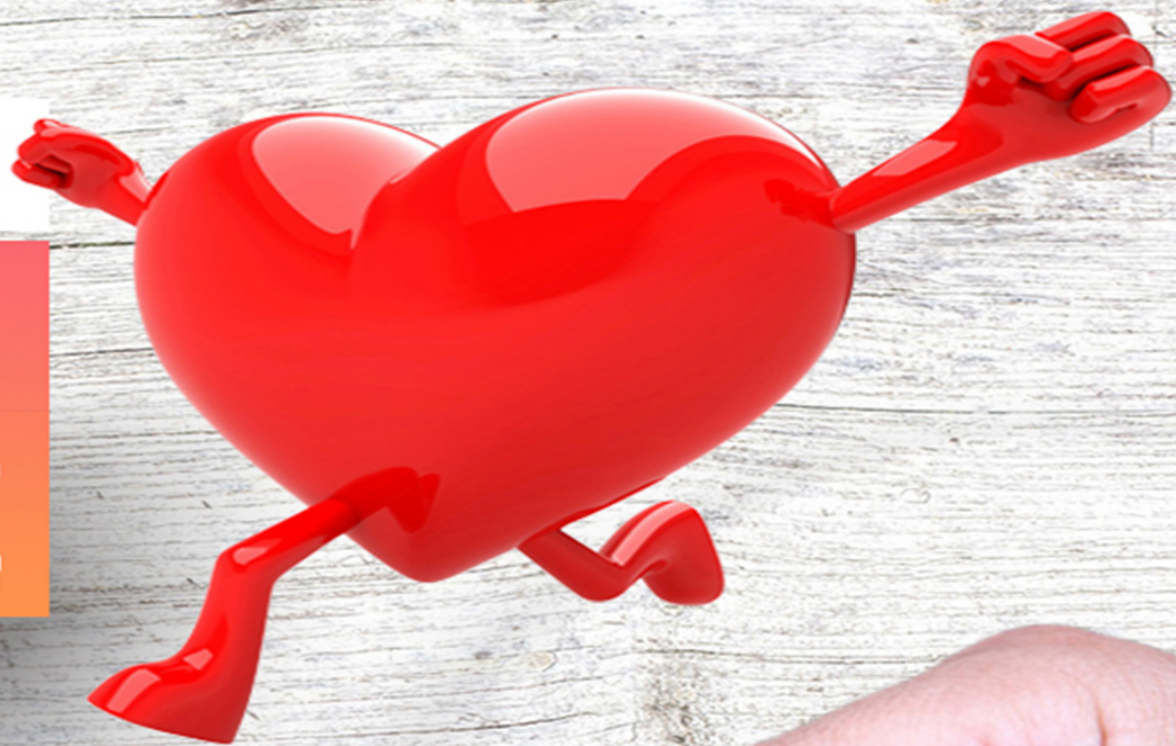
Click  
Here to  
Respond



Click  
to  
Follow  
Along

Scroll  
Down to  
Respond

**REBUILDING WITH A**  
**HEART OF**  
**OBEDIENCE**



*Do not merely listen to the word, and so deceive yourselves. Do what it says.*

**JAMES 1:22 NIV**

**August 2020**



## Icebreaker Question #1

How can doubting affect a person's prayer life?

## Icebreaker Question #2

What are some ways to encourage a friend who feels that God is not answering his or her prayers because of a lack of faith?



## Icebreaker Question #3

What should you do when you begin to recognize double-mindedness in yourself?

## Bonus Question

How is double-mindedness  
a hindrance to receiving  
wisdom from God?

## Bonus Question

Explain the connection between  
lacking wisdom and being  
“double minded” and “unstable”  
(James 1:8).

# SCRIPTURES ON PATIENCE AND ENDURANCE

Psalms 40:1 KJV

Habakkuk 2:3 KJV

Luke 21:19 KJV

Galatians 6:9 KJV

Romans 5:1-8 NIV

Hebrews 6:11-12 NLT

2 Peter 1:5-10 NLT



# Wisdom—

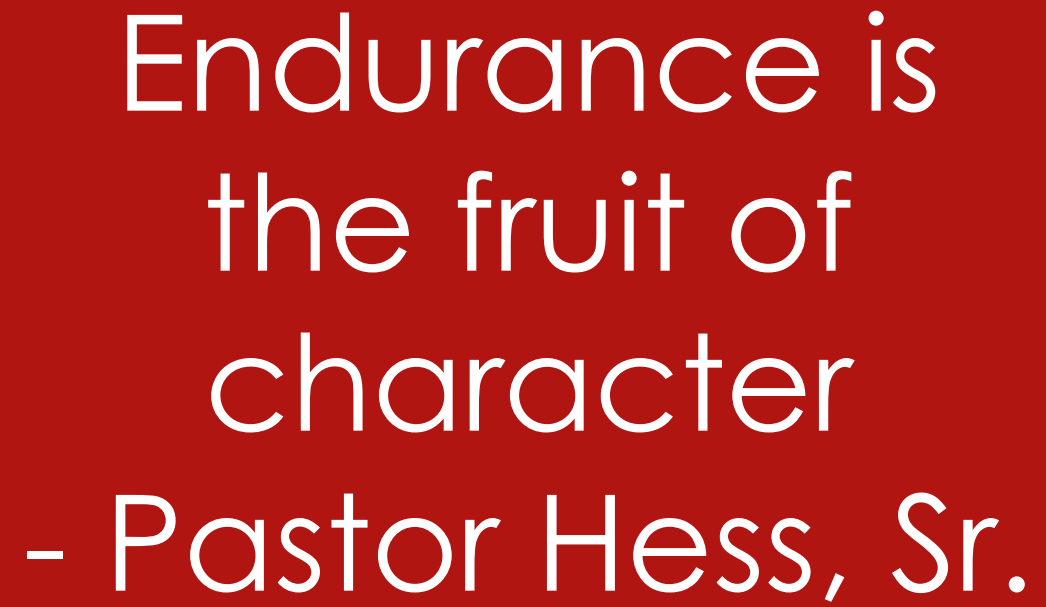
# God gives generously

"Wisdom" is not  
primarily  
knowledge, but  
godly behavior in  
difficult situations

Quote 1

God will give you  
endurance until He  
gives you  
**DELIVERANCE**  
- Pastor Hess, Sr.

Quote 2

A red speech bubble with a white border and a tail pointing towards the bottom right, containing white text.

Endurance is  
the fruit of  
character  
- Pastor Hess, Sr.

A solid red rectangular tab located in the top right corner of the slide.

Quote 3

A red speech bubble with a white border and a tail pointing towards the bottom right, containing the text "The fruit of hope is Endurance...".

The fruit of  
hope is  
Endurance...

A red rectangular tab located in the top right corner of the slide.

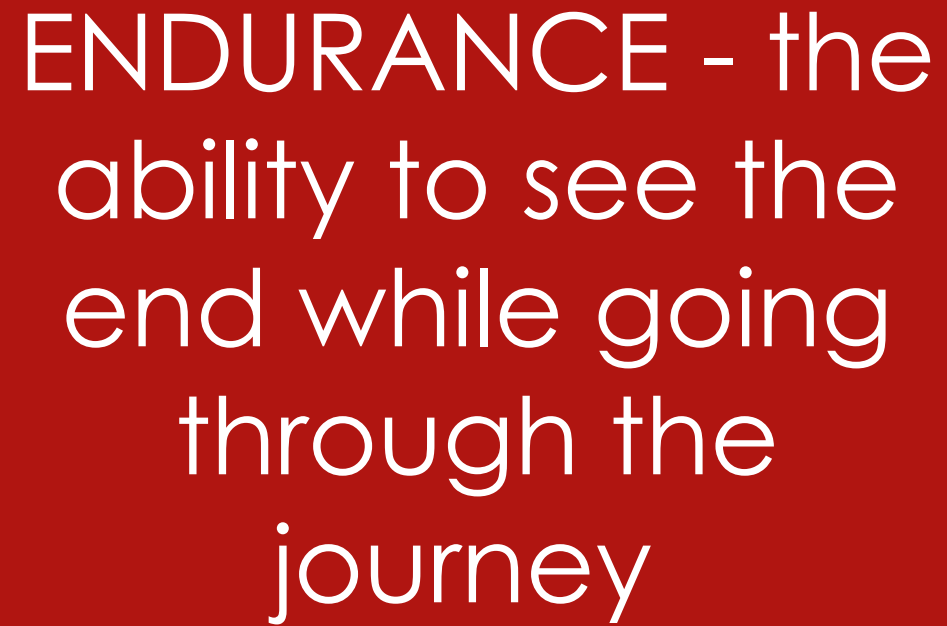
Quote 4

A red speech bubble with a white border and a tail pointing towards the bottom center, containing the text "Endurance Demoralizes An Adversary".

Endurance  
Demoralizes  
An Adversary

A small red rectangular tab located in the top right corner of the slide.

Quote 5

A red speech bubble with a white border and a tail pointing towards the bottom right, containing the definition of endurance.

ENDURANCE - the  
ability to see the  
end while going  
through the  
journey

A red rectangular tab located in the top right corner of the slide.

Quote 6

A red speech bubble with a white border and a tail pointing towards the bottom right, containing the quote.

Joy is the result  
of endurance  
- Dr. Cindy Trim

A small red rectangular tab in the top right corner of the slide.

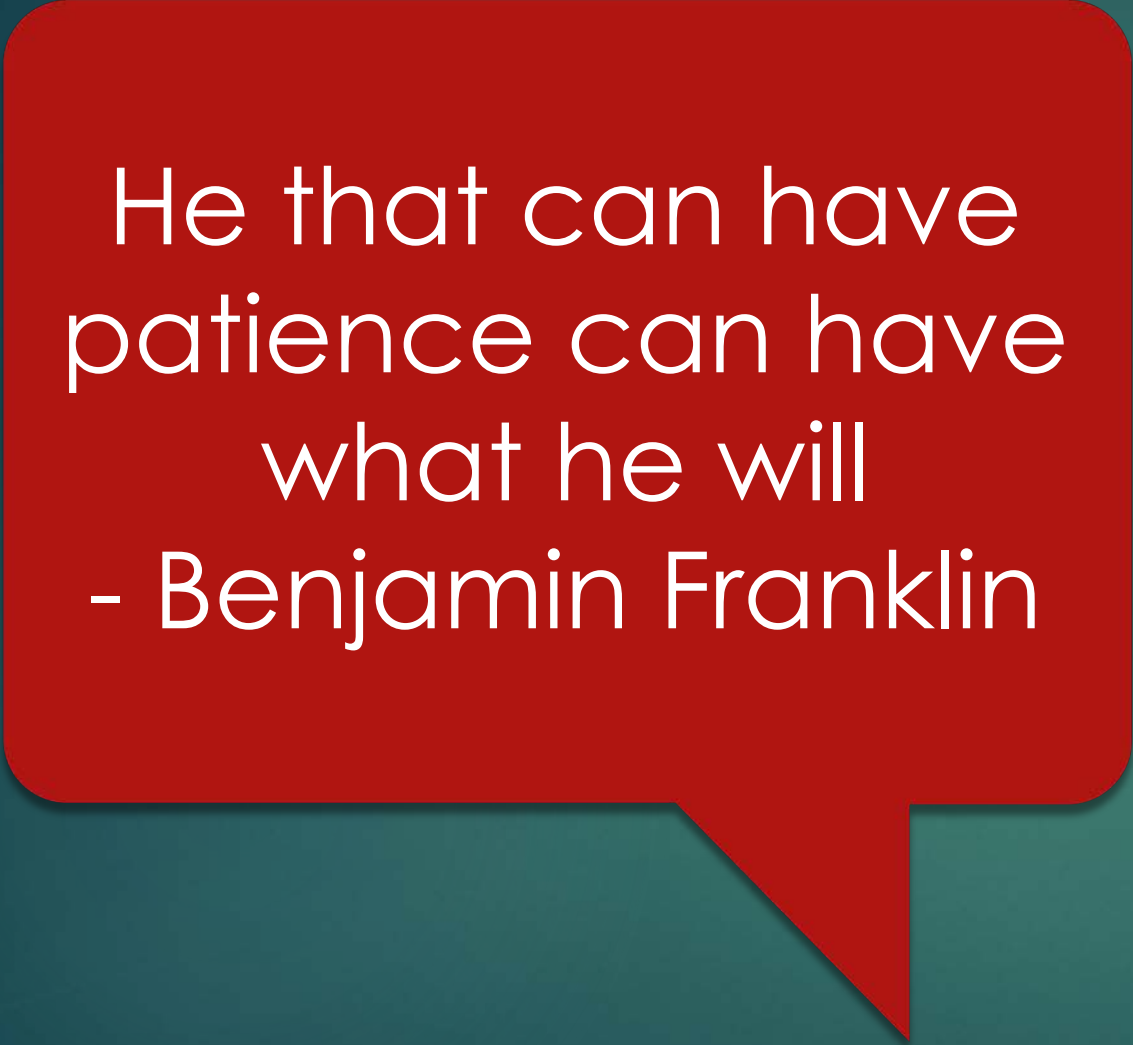
Quote 7

A red speech bubble with a white border and a tail pointing towards the bottom right, containing the text "Patience is a weapon that forces deception to reveal itself".

Patience is a  
weapon that forces  
deception to  
reveal itself

A small red rectangular tab located in the top right corner of the slide.

Quote 8

A red speech bubble with a white border and a tail pointing towards the bottom center, containing the quote and attribution.

He that can have  
patience can have  
what he will  
- Benjamin Franklin

A small red rectangular tab located in the top right corner of the slide.

Quote 9

Prayer List

USING THE Q&A BOX,  
YOUTUBE CHAT OR  
FACEBOOK COMMENTS,  
PLEASE SEND YOUR  
PRAYER REQUEST

Thank You  
for Attending  
Christian  
Development

